



**BACKYARD** / A magnificent lemon-scented gum shades the lawn. Outdoor sofa and armchair, Eco Outdoor.  
**ENTRY** / Original stained glass contrasts with boldly modern lighting. Rina pendant light, Studio Italia. Rug, Halcyon Lake. The artwork was purchased in Chiang Mai, Thailand. FOR WHERE TO BUY, SEE PAGE 208.



H&G HOUSES



## *Status* UPDATE

Old and new, light and dark, private and social are deftly balanced in this heritage Melbourne home, reinvented as a sophisticated family haven.

STORY & STYLING JULIA GREEN / PHOTOGRAPHY ARMELLE HABIB

## *This is the life*

After a well-judged renovation, this home is zoned for harmonious family living. "We can use the study or sitting room as a retreat while the children use the family room or the swimming pool to entertain their friends," says one of the owners. Equally harmonious is the seamless merger between original and modern elements. "We love the feeling that the old home is still a presence in this contemporary, comfortable space."



**KITCHEN/DINING** / Frodo the Scottish fold appreciates the heated bluestone floor and cosy rug. Benchtop in Elba marble. Table and chairs, Mark Tuckey. Replica stools, Matt Blatt. Nola black pendant lights, Studio Italia. Rug, Halcyon Lake. Artworks by Gee from Tusk Gallery. **FOR WHERE TO BUY, SEE PAGE 208.**



*'The kitchen/living area is a favourite space. It's beautiful, comfortable and light, with lovely garden views.'* Owner



This Queen Anne-era property, in a tree-lined street in eastern Melbourne, was in near-original condition when the current owners purchased it in 2010. With three teens and four-legged friends to accommodate, the couple's need to renovate was pressing. They hired Geoff Challis of Venn Architects to modernise the home and deliver flexibility through multiple living zones.

From the outset, Geoff was careful to pay particular attention to the home's heritage overlay and period features, to enhance the 'old with new' feel requested by his clients.

"We wanted to give the house a sense of openness and light, so we started by creating a pavilion between the internal courtyard and rear garden, which feels like it's surrounded by outside space," says Geoff. With 5m soaring ceilings and clerestory windows offering views of sky and trees, the new space meets the light and space criteria beautifully. The windows track sun all day, making this a favourite spot to linger.

The contemporary kitchen offers a dramatic contrast to the garden views. Marble, dark-stained cabinetry and pale timber were chosen for their sophisticated yet natural qualities, while a butler's pantry was added to hide appliances and provide extra storage. ►



*'There's always a huge "Wow!" reaction to the clever design and beautiful finishes.'* Owner

## THE PALETTE

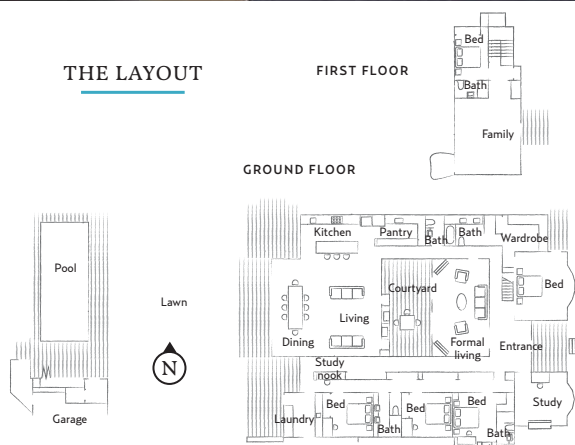
*Dulux Lexicon, half strength*  
living, main bedroom

*Dulux Spanish Eyes*  
formal living

Add a dash of

*Taubmans Mariner*

## THE LAYOUT



**MAIN BEDROOM** / Family photos and cherished antique pieces define a personal and private space. Armchair, Zuster. Blue throw, Freedom. Artwork by David Nona. **Smart buy:** Condo Plush carpet in Raven, from \$64/m<sup>2</sup> (installed), Godfrey Hirst Carpets.

**LIVING** / In cold weather, a wood-burning fireplace is the focus of this family-oriented room. Sofa, Jardan. Coffee table, Zuster. Cushion, Marimekko. Bocci pendant lights, Hub Furniture Lighting Living.

**POWDER ROOM** / Blown-glass lights cast playful reflections in the mirror. Vanity, Laufen Pro. Tapware, Astra Walker. **FOR WHERE TO BUY, SEE PAGE 208.**

#### FEATURE PLANTS

##### BACK GARDEN

**Lemon-scented gum**  
(*Corymbia citriodora*)

**Peppercorn tree**  
(*Schinus molle*)

##### COURTYARD

**Japanese maple**  
(*Acer palmatum*)





## H&G HOUSES



◀ Bolstering the flexibility of the downstairs living space is a central internal courtyard that boasts an outdoor fire. “This has been a huge hit for all family members, whether seeking solitude or some time together,” says Geoff. “Many a get-together has taken place under the night sky in the courtyard with the roaring fire.”

In another clever design feature, a tall bank of cabinetry panelled in limed American oak runs along the east-west corridor. This conceals copious storage and hides the wing of teens’ bedrooms and bathrooms, plus a study and laundry, from the main body of the home.

The young folk also enjoy a wonderful upstairs hideaway of their own under the original gabled roof and terracotta-tiled turrets. At any time you may find a group of teenage boys playing drums or watching a movie here. Equipped with a guest bed, this eyrie is comfortably removed from the parents’ retreat downstairs.

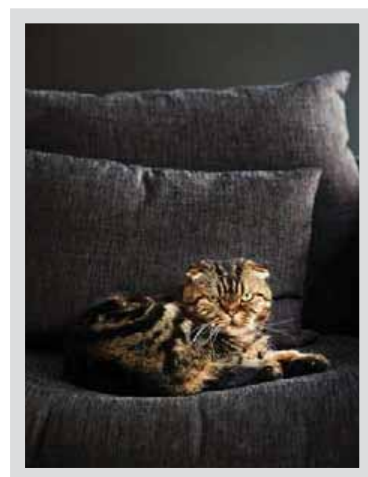
A cohesive sense of style and comfort pervades the entire home, thanks to well-considered materials in an edited neutral palette. The family’s journeys abroad have been referenced in specific pieces of art and furnishings, making this home a highly personalised space with sophisticated overtones. Enchanting gardens, a generous pool and a pool house complete the family’s happiness with their ‘keeper’ home.

“All the zones work well for us,” says one of the owners. “While we love spending time together, it’s nice to know that we can also steal quiet moments when needed.”

**H&G**

**Venn Architects, South Melbourne, Victoria; (03) 9682 4222  
or [www.vennarchitects.com](http://www.vennarchitects.com).**

*‘Many a get-together has taken place under the night sky in the courtyard.’*





## Reno notebook

**Location** Inner eastern Melbourne.

**Brief** Living zones generous enough for a family, plus a kitchen/dining space that would work for entertaining as well as areas for adults and children to retreat to.

**Outcome** An updated home that retains its period charm.

**Save** The white tiles used in the bathroom were surprisingly inexpensive.

**Splurge** American oak panelling in the hallways was well worth it. The timber gives a lovely feeling of warmth to the home.

**Favourite element** The bright kitchen/living area with sliding doors offers true indoor-outdoor living.

**Lessons learnt** With clever design and considered use of materials, it's possible to modernise a home in an area with strict heritage regulations.

**COURTYARD** / A graceful Japanese maple emerges from the timber decking. The outdoor fireplace makes this a popular spot for relaxing and socialising in any season.

**Designer buy:** Acapulco chair, \$545, Amor Y Locura.

**FORMAL LIVING** / **opposite, top and bottom** Frodo has no complaints about comfort levels. Sofa and armchair, Jardan. Cushions, Freedom. Blue twig cubes, Crate Expectations. **FOR WHERE TO BUY, SEE PAGE 208.**

